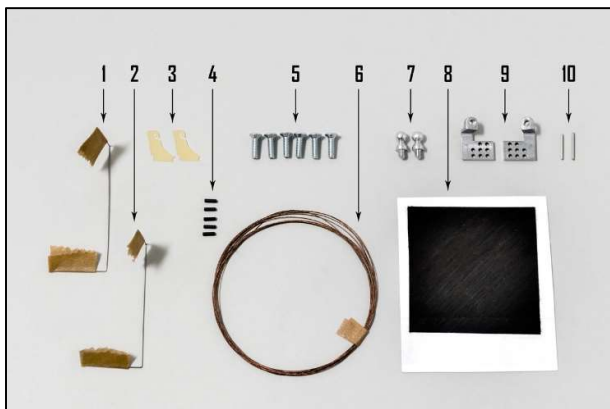


1. The list of parts and materials to build:

Accessory kit:



Parts set:



- | | |
|---|------------------------------------|
| 1. Elevator spring; | 11. Accessoires of Snipe 2 El kit; |
| 2. Rudder spring; | 12. Tail boom; |
| 3. Snipe 2 electric elevator and rudder control horns; | 13. Fuselage; |
| 4. Pipes for the fixing control cables (1pc is spare); | 14. Canopy; |
| 5. Screws for wing and rudder M3x10 (3pcs are spare) | 15. Rudder; |
| 6. Snipe elevator and rudder control steel cable; | 16. Horizontal stabilizer; |
| 7. Snipe 2 aileron ball head aluminum screws (2 pcs); | 17. Wing. |
| 8. Carboline SC 78 4/30 carbon for fixing aileron horn pins; | |
| 9. Snipe 2 aluminum aileron control horns set (left and right); | |
| 10. Aileron horn pins (2 pcs). | |

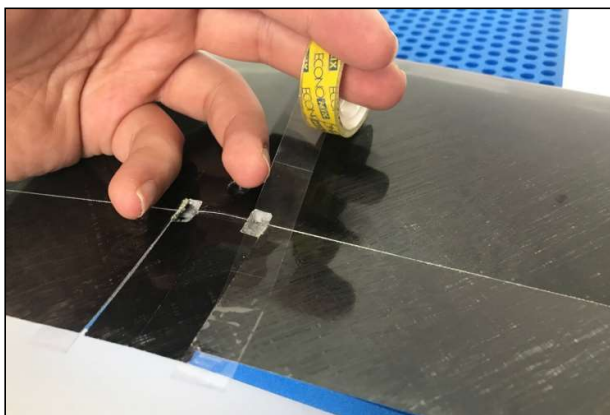
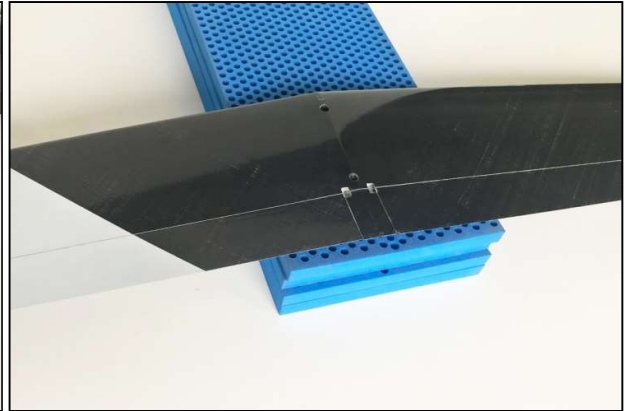
The list of materials needed to build the model:

- | | |
|---|-----------------------------|
| 1) Superglue and liquid medium, the accelerator | 4) Pen and ruler |
| 2) Cutter | 5) Pliers |
| 3) Masking tape | 6) Sandpaper number 240-320 |

2. Assembling the model

2.1 Aileron horns installation.

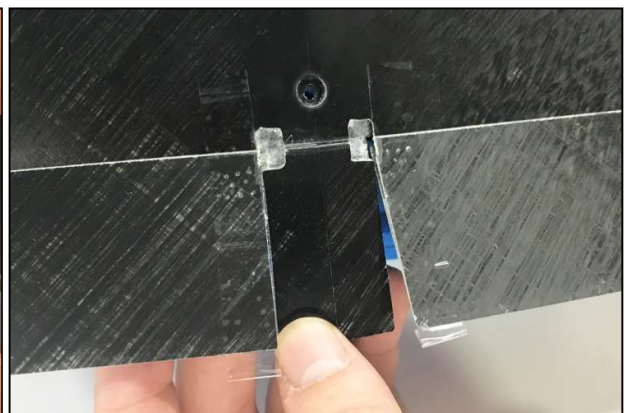
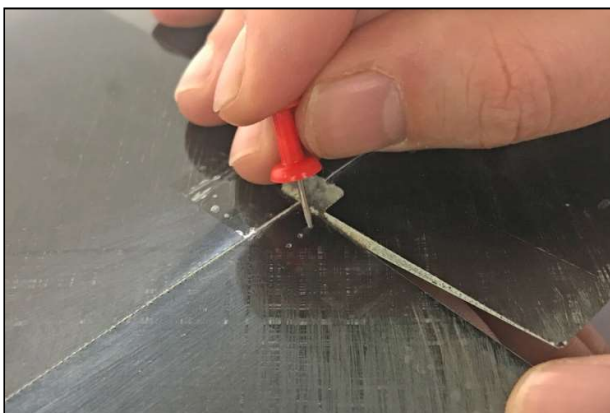
This is very important sequence to follow for successful control installation.



Place a small piece of tape on bottom of flap over control horn and make small hole in flap with pin for glue hole.

CAUTION!

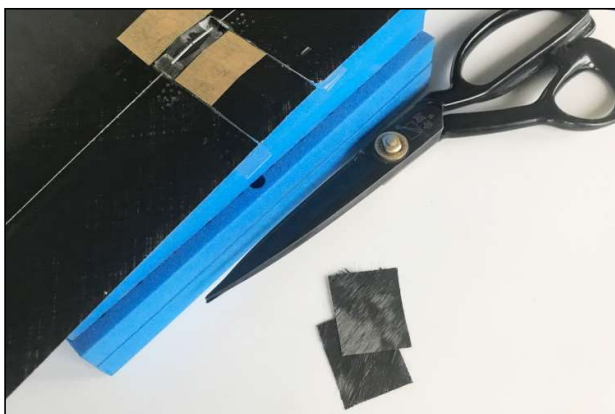
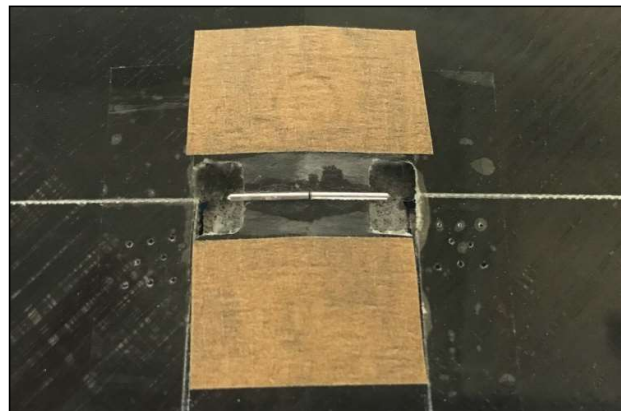
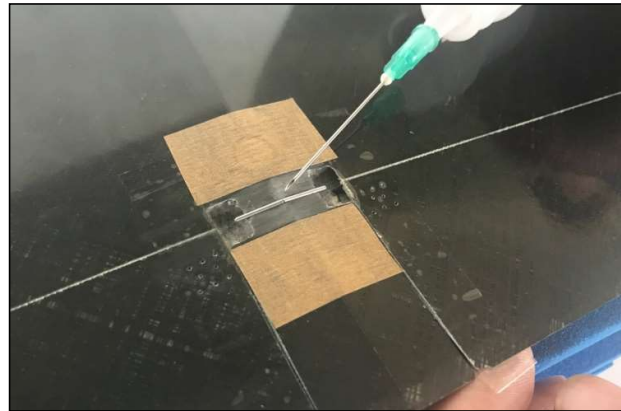
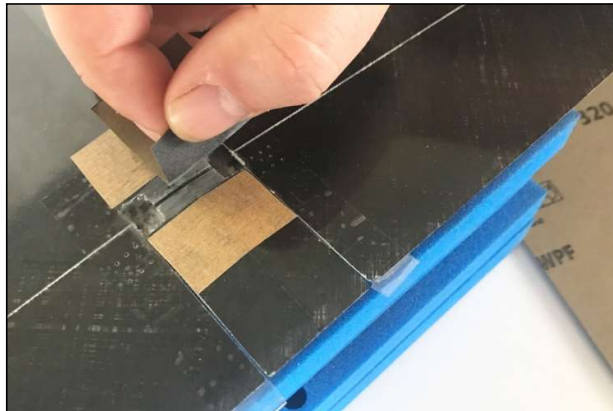
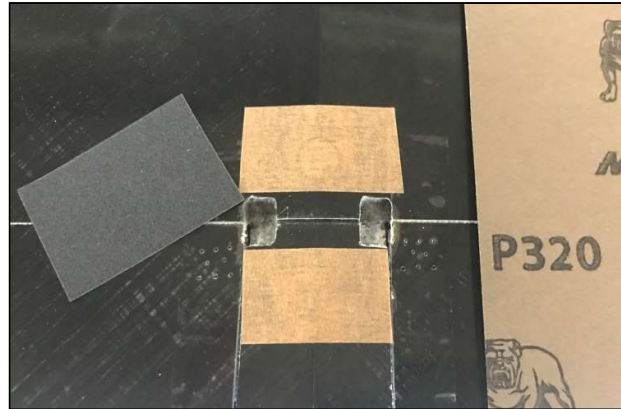
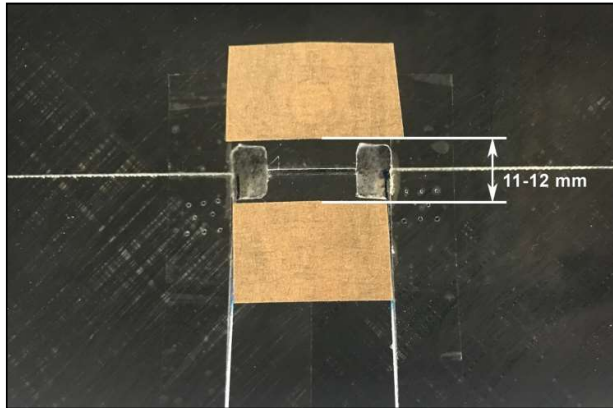
Gluing zone of aluminium horn is **covered with primer** for epoxy and CA!



SNIFE 2 EL

Recommendations for assembly

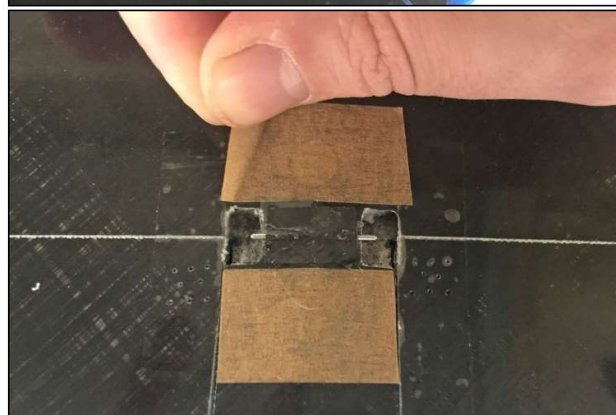
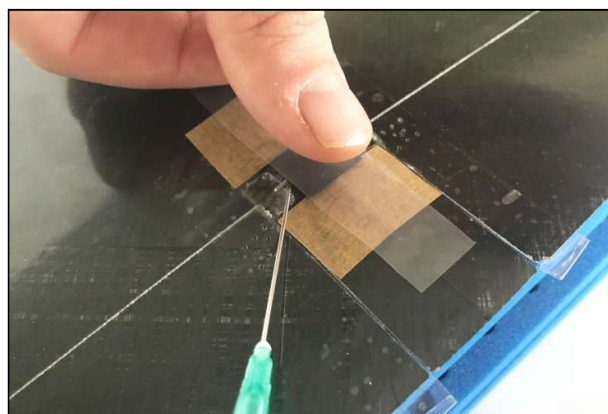
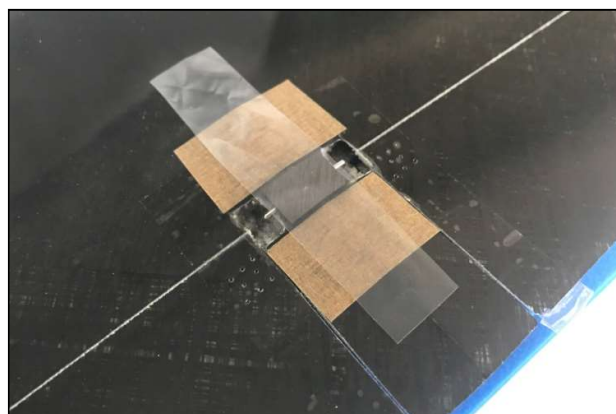
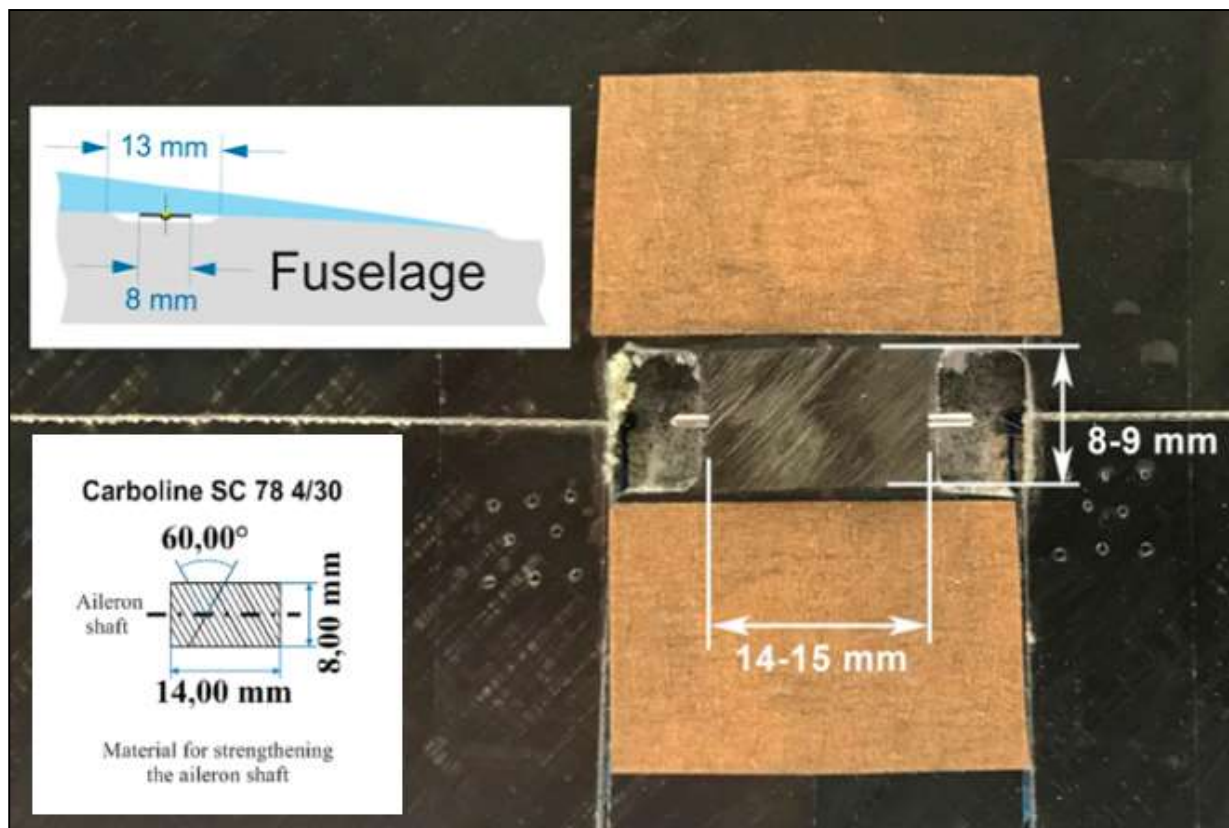
Glue pins in grooves at bottom of wing.



Reinforce aileron's pins by 2-3 layers of Carboline SC 39 2/45 (8x14 mm).

SNIPE 2 EL

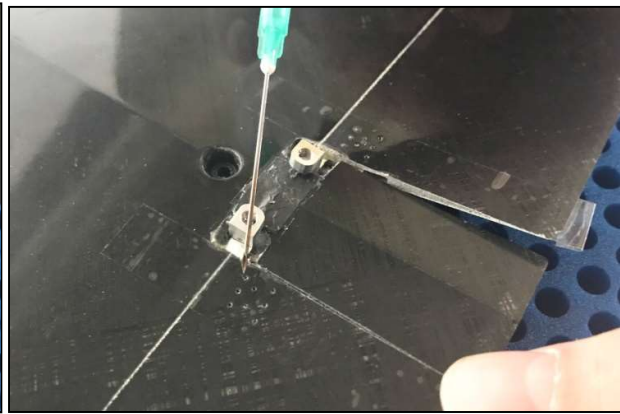
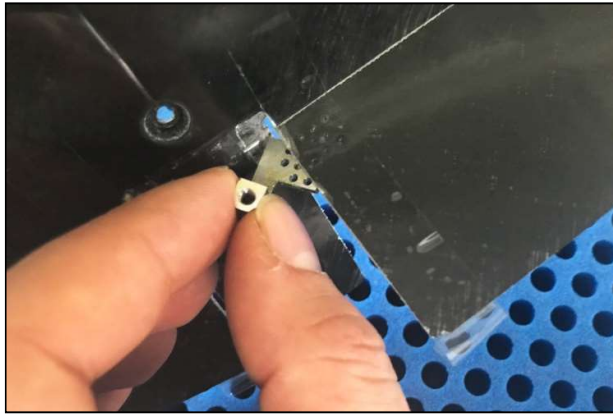
Recommendations for assembly



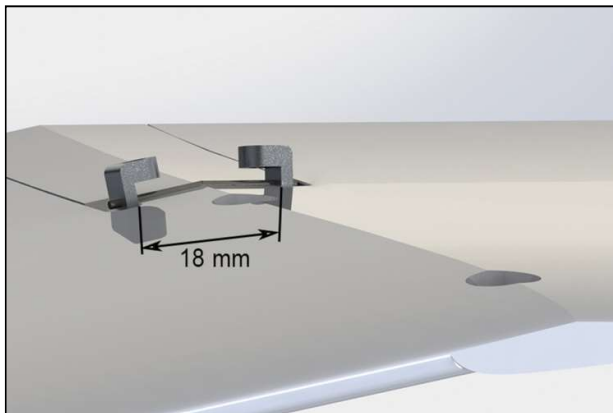
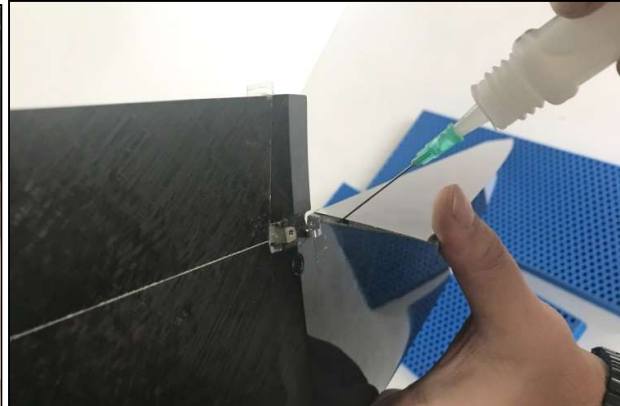
SNiPE 2 EL

Recommendations for assembly

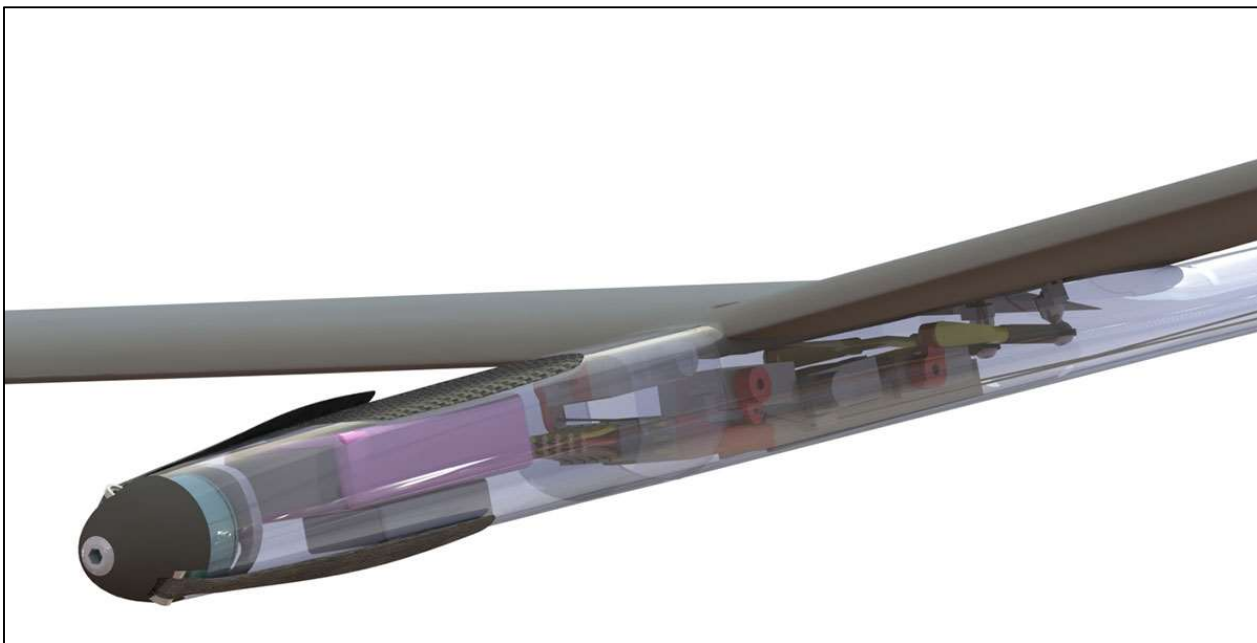
Then slide control horn into slot in flap. Next, slide control horn on pin and push horn to inside edge of hole, toward center of wing. Leave just enough clearance between horn and hole so the horn does not scrape edge of hole.



Use some thin CA and drip glue into pin hole. When CA is dry, remove tape. Pull flap down and fill space around control horn with CA.



2.2 Snipe 2 EL Fuselage.



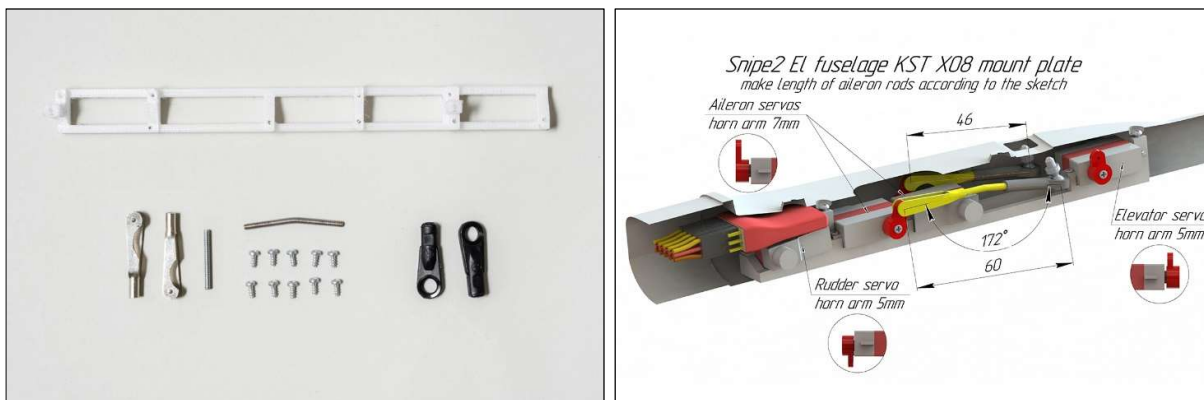
Cut the back side of nose for get right CG position



Motor plate is ready for motor 1806



2.3 Snipe 2 Electric fuselage KST x08h mount plate

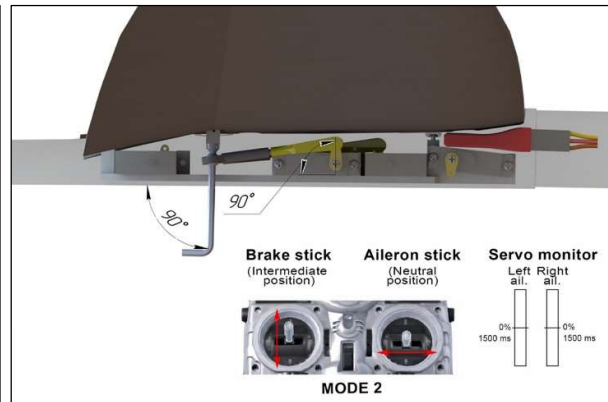
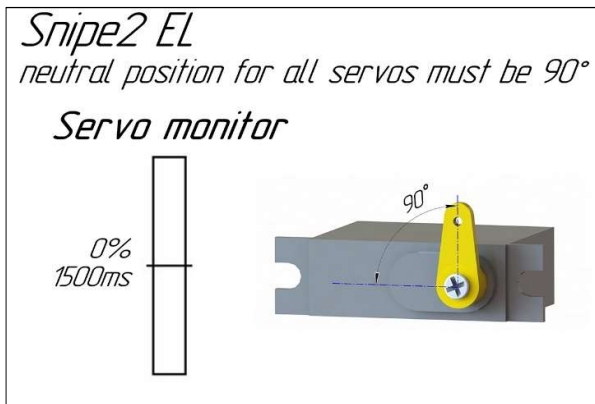


Snipe 2 Electric fuselage D-47 (SD-100) mount plate

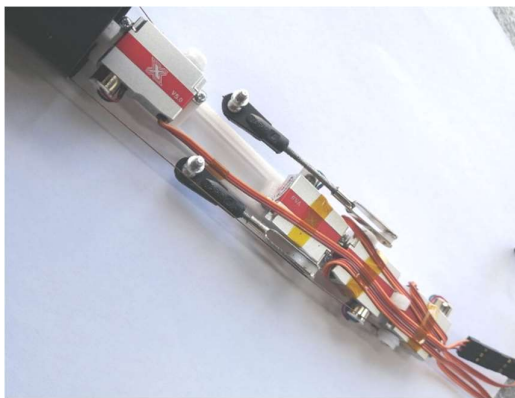


Snipe 2 Electric fuselage KST X08 and SD-100 mount plate





2.4 Snipe 2 EL Tail



2.4.1 Installation of torsion springs and horns

Cut the sides of the torsion bar, which will be located in the rudder and elevator. Leave 15mm length.



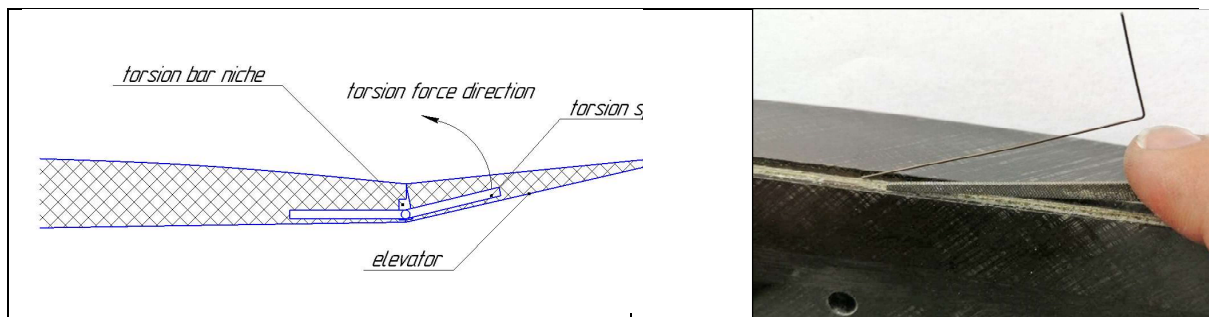
Install the stabilizer to the fuselage to mark the position of the elevator horn. You can use paper tape to better see the mark. Control cable should be along the left side of the fuselage, as left as possible: the cable should pass by the fin spar. Make an incision with knife and insert elevator horn. Fix with CA.



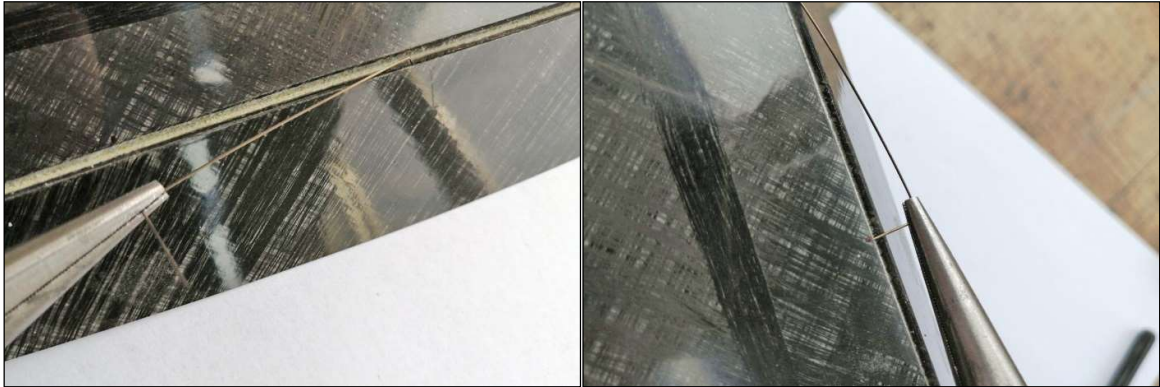
Rudder torsion spring: Set the rudder torsion spring as shown in the picture.



Elevator torsion spring: Scratch the torsion bar niche as shown in the sketch. Insert torsion spring to the elevator. ATTENTION! Snipe 2 EL torsion spring have to pool elevator up! It works in the opposite direction compared to Snipe 2 DLG. The right direction is shown in the sketch below.



To complete the installation of the torsion spring, you need to bend down the elevator. Twist the torsion bar with pliers and insert into the stabilizer



Torsion bar is installed correctly if the gap on the upper surface of the stabilizer closes with torsion loading.



To install the rudder horn, assemble the tail and pull the control cable of the rudder 2 mm above the horizontal stabilizer. Draw a mark along the control cable. You can use paper tape as well as for marking the elevator horn. Make an incision with knife and insert rudder horn. Fix with CA.



Cut off the aluminum part of the horizontal stabilizer as shown in the picture. This will prevent damage to the control cable when assembling the tail.

